



UPDATE

November 2013

Issue Eighteen

CHAIRMAN'S NOTE

There are likely to be some challenges and opportunities for local authorities over the next few years which may well affect our funding and

therefore what we can achieve, and also our options. One will be whether we can take the major step of working with the community on a Neighbourhood Plan. Plus we are also working on a strategic plan which will guide us over the next few years, with a view to help us work within our resources and not try to take on too much all at once which we might then struggle to handle. Being a smaller organisation than our local district and county council we run on very limited staff time and volunteer councillors.

You will be receiving the printed version of our local directory with this delivery. Hope you find it useful. We keep it up to date on our

Contents

Chairman's Note	1
New discussion area on website ..	2
Community Speed Watch	2
There's nothing to do!	3
Grants and Donations	3
Allotments	4
Bonfires and neighbours	5
Reporting problems	6
New Councillor, Tony Sollars ...	6
Parish & Borough Councillors ...	7
Dates for your diary	8

website so if you notice any changes or have ideas for new entries please let us know.

After some delays due to problems with old ducting, superfast broadband will soon be available in most of the parish. You may have seen BT Openreach making their way along the Petworth Road in recent months. The latest completion date is the end of December 2013.

We're very pleased that the Pumas

continued on page 2 ...

continued from page 1 ...

have started using Jubilee Field in Milford and also hope you are enjoying the new play equipment for older children which was installed earlier this year.

The 100th anniversary of the outbreak of WWI will be commemorated next year and along with Waverley and probably the rest of the nation we are wondering what we can do locally to mark the occasion. We have a

few ideas but if you have any thoughts please let us know.

If you are thinking of setting up a new community organisation have a look at the article on page 3. We may be able to give you a grant or a donation.

Hope to see you at one or more of our Christmas Tree lighting events. See page 8 and our notice boards nearer the time.

Councillor Julie Grist, Council Chairman, 2013-14

NEW DISCUSSION AREA ON THE WEBSITE

Our website at www.witley-pc.gov.uk has recently had an upgrade and we now have a space for you to share your views on a variety of topics.

To contribute to or read a discussion go to Community Forum, in the tabs along the top of the page. At the moment there are discussions about the website itself and on the parish noticeboards, plus an open discussion area.

Do let us know what you think!

Councillor Gillian McCalden, Chairman, Community Communications Sub-Committee, 2013-14

COMMUNITY SPEED WATCH

Speedwatch concentrated on the A283 over the summer with some interesting results.

On one occasion, in the space of an hour, we recorded more than 70 cars travelling above the newly reduced 30mph speed limit past Rodborough. It's quite possible that this was down to people not realising the speed limit had changed, as this was,

thankfully, an isolated incident. Hopefully, the new speed limit reminder signs Surrey County Council have installed between the school and the Star will help. However, if you do have trouble keeping your speed down through the village, why not set your cruise control to 30 and you won't be

continued on page 3 ...

continued from page 2 . . .

tempted to put your foot down.

We are delighted to say that most people slow up when they spot us as this is the main purpose of our presence out there – not to penalise so much as to remind people to be aware of their speed. If you have a

speeding problem on a road near you which is either 30 or 40mph and you might be willing to put in an hour every so often to wield the speed gun, why not get in touch? I am the Speedwatch co-ordinator and can be contacted on 01428 682181.

Councillor Christy Crouch, Lead Member Speedwatch project, 2013-14.

THERE'S NOTHING TO DO!

Did you hear that from your teenagers this Summer? We're trying to help.

Witley Parish Council doesn't have the resources to organise any activities itself, but we would like to support anyone in the parish who is trying to do so.

If you have an idea for activities for young people over the summer holidays in 2014, please get in touch and see if we can help you.

- **We have grants available to**

provide funding to get a project of the ground (see below).

- We may be able to put you in touch with someone who can give practical support with things like finding a venue or arranging insurance.
- **We can help you promote your project by providing information about it on our website.**

So if you've got a project in mind, contact us and see if we can help.

Councillor Julie Grist, Council Chairman, 2013-14

GRANTS AND DONATIONS

Witley Parish Council supports organisations throughout the parish with funding.

In recent years we have provided grants and donations to the local halls; our village scout and beaver groups; schools; charities such as Victim Support; day centres



for older people; and others. But, strangely in the current financial climate, we don't always enough applications to use all the allocated funds.

There are a few restrictions on grants. These are the two most important ones:

continued on page 4 . . .

continued from page 3 . . .

- The money must be used for capital expenditure rather than ongoing costs. That is, must be used to buy items rather than pay for repairs or wages.
- This is matched funding. We will pay half of the cost of any project, so you must have money in your budget to pay the other half.

There are two levels of grants – small grants of up to £750 which you can apply for at any time of year and partnership grants of over £750

which need to be with us by mid November each year.

Applications for donations to charities can be made at any time and there are no restrictions on how these can be used. The amount of these is at our discretion.

If you think we may be able to help your organisation contact the Clerk and ask for a grant application form or go to our website and download it.

*Councillor Patrick Stewart, Chairman,
Finance and General Purposes 2013-14*

ALLOTMENTS REMINDER

Witley Parish Council runs allotment sites at Redgate Farm and Enton, with a total of over 118 plots.

It's been a good year for growers and some plots have produced an amazing yield of vegetables and fruit. At Enton a number of plot holders now have chicken runs, so we can add eggs to the list of produce.

However, in recent years we have seen an increasing number of unworked plots where the weeds have been allowed to take over. This makes life difficult for other

plotholders who struggle to stop the weeds spreading to their own plots and it makes the whole site look uncared for.

We are now taking steps to improve that situation by asking any plotholder who has apparently given up on their plot to either start using it again or to relinquish it, allowing someone else to take over. This has always been the rule, but we are now enforcing it more rigorously and more quickly.

The outcome of this will probably be that there will be more plots available. So now is a good time to get in touch with the Clerk and put your name down for an allotment.



BONFIRES – CONSIDERING YOUR NEIGHBOURS

It's that time of year again, season of mellow fruitfulness and ... bonfires. Sometimes a bonfire can be the most practical way to dispose of garden waste that cannot be composted and if only **dry** garden waste is burnt, then the occasional bonfire should not cause a major problem. However, Waverley's Environmental Health team receive many bonfire related complaints every year and while there are no specific laws against having a bonfire, there is legislation to deal with the nuisance they can cause if not managed appropriately.

So, if you're planning a bonfire over the autumn, the following measures may help you avoid falling foul of your neighbours.

- Tell the neighbours most likely to be affected by smoke from your bonfire before you start – this might include affecting their use of their garden; stopping them opening their windows or hanging out washing.

- Avoid burning at weekends, bank holidays and during unsuitable weather conditions, when smoke may be blown into neighbours' gardens.

- Don't burn household rubbish, rubber tyres, engine oil, petrol, or

anything that contains plastic, foam or paint. This is against the law.

Such fires may create poisonous fumes with damaging health effects.

- Only burn dry material as it burns hot and produces less smoke. Never leave the fire unattended or smouldering.

- Avoid burning when air pollution levels in your area are high. You can check this by looking at the local weather forecast or the air quality website.

- Keep your fire away from trees, fences and buildings.

If you do affect your neighbours with smoke and/or ash, Waverley Borough Council can investigate the matter to ascertain whether you are causing a statutory nuisance. A one-off incident is not normally a statutory nuisance, but if you have more regular bonfires that disturb your neighbours, Waverley will consider enforcement action.

If you are being disturbed by smoke, the best initial course of action is to approach your neighbour

continued on page 6 ...



continued from page 5 . . .
and explain the problem. This may be difficult but your neighbour may simply be unaware of the effects the bonfire is having.

If this fails, the Environmental

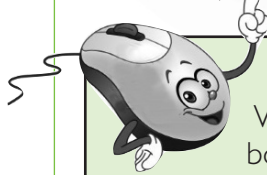
Health department can be contacted as follows:

Deborah Holland

01483 523393,

email

deborah.holland@waverley.gov.uk



REPORT IT

Waverley Borough Council and Surrey County Council both have excellent pages on their websites for reporting problems in the area – everything from abandoned vehicles to vandalism, including anti-social behaviour, missed bin collections, potholes and many more. Check it out! It's the fastest way to let someone know that there is an issue that needs attention.

Waverley: **www.waverley.gov.uk/reportit**

Surrey: **www.surreycc.gov.uk/do-it-online/report-it-online**

NEW COUNCILLOR



In June we were delighted to welcome Tony Sollars as a new councillor.

Tony grew up in a small village in Surrey, and has lived in Witley for the last 14 years. He has worked in IT consultancy for the past 20 years for firms based in Godalming and Guildford. He is married with two children at the local Witley state schools and is a regular on the school footpath if you wish to speak to him. His main reason for joining the council was a desire to put

something back into the local community. His concerns for Witley are reducing traffic speed through the village and avoiding over development. He would like to get involved with the safe routes to school initiatives.

With the co-option of Tony we now have fourteen councillors on the Parish Council, but we do still have two vacancies. If you care about your local environment and have time to put something back into the community we would love to hear from you. Please contact the Clerk for more details about how to apply to become a Parish Councillor.

Witley Parish Councillors

Milford Ward

Graham Hewett . . 01483 417415
graham.hewett@witley-pc.gov.uk

Donald Johnstone
(Chairman, Planning Committee)
..... 07833 616131

Jack Lee 01428 684853

Stephen Mills 01428 682414
stephen.mills@witley-pc.gov.uk

Patrick Stewart (Chairman, Finance
and General Purposes Committee)
..... 07785 274867

Witley Ward East

Christy Crouch ... 01428 682181

Steve Dale (Council Vice Chairman;
Lead Member Wormley)
..... 01428 681356

Maxine Gale (Lead Member Enton)
..... 01428 683055

Julie Grist (Council Chairman)
julie.grist@witley-pc.gov.uk
01428 683448

Barbara Kinnes ... 01428 682870

Gillian McCalden (Chairman,
Amenities and Environment Committee)
..... 01428 682405
gillian.mccalden@witley-pc.gov.uk

Louise Mills 01428 682414

Tony Sollars
tony.sollars@witley-pc.gov.uk

Witley Ward West

Jill Longmore (Lead Member Brook
and Sandhills) 01428 683942

Your County and Borough Councillors

Surrey County Council

Godalming South, Milford and Witley

Peter Martin 01483 425644
peterj.martin@surreycc.gov.uk

Waverley Western Villages

David Harmer 01428 609792
david.harmer@surreycc.gov.uk

Waverley Borough Council

Elstead and Thursley

Jenny Else 01252 702036
jenny.else@waverley.gov.uk

Bryn Morgan 01252 794993
bryn.morgan@waverley.gov.uk

Milford

Lynn Graffham 01483 426636
lynn.graffham@waverley.gov.uk

Denis Leigh 01483 420025
denis.leigh@waverley.gov.uk

Witley and Hambledon

Elizabeth Cable 01428 682640
elizabeth.cable@waverley.gov.uk

Adam Taylor-Smith
01428 681783
adam.taylor-smith@waverley.gov.uk

DATES FOR YOUR DIARY



Christmas Tree Lighting Events

Friday 29th November, 7pm

Chichester Hall, Witley
Pirrie Hall, Brook

Friday 6th December, 7pm

Milford Village Hall, Milford



Annual Parish Meeting

Thursday 20th March 2014

at the Burton Pavillion at 8.00pm

Council Meetings

Meetings of the Full Council are held in the Burton Pavilion, Milford Heath Road, Milford at 8.00pm on the last Thursday of each month except August and December. Meetings are open to the public. The building is accessible for people with mobility problems. Residents wishing to raise any matter with the Council are asked to notify the Clerk at least 5 days prior to the meeting.

Where to find us

Council Office, Milford Village Hall, Portsmouth Road
Milford, GU8 5DS

Office hours: Monday to Friday 8.30am – 12.30pm.

Tel: 01483 422044

Clerk – **Fiona Fox** (email: clerk@witley-pc.gov.uk)

Assistant Clerk – **David Ralf** (email: asst.clerk@witley-pc.gov.uk)

www.witley-pc.gov.uk

